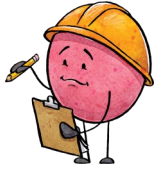


The Six Principles Of Nurture at Welton



We are proud to work alongside Nurture UK to embed The 6 Principles of Nurture into our daily practice



Our classrooms offer a safe base

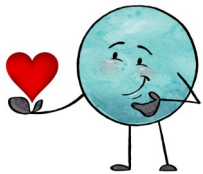
"We feel safe"

Our classrooms are designed to be a safe place where children feel secure and supported. This stable environment allows them to explore, learn and grow with confidence.

We understand the importance of transition in our lives

"We are supported"

Transitions can be challenging, whether they are between activities, year groups or life stages. At Welton, we provide guidance and support to help children navigate these changes smoothly.



Nurture is important to our well-being

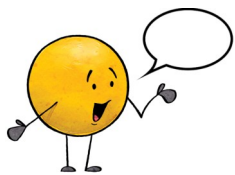
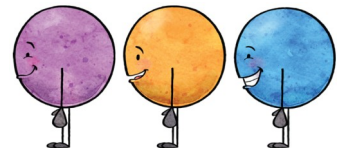
"We feel cared for"

Nurturing relationships are key to emotional well-being. We prioritise creating positive connections between the children, teachers and all staff to promote a sense of belonging and happiness.

All behaviour is communication

"We are understood"

We recognise that behaviour is a form of communication. By understanding and interpreting behaviours, we can provide appropriate support.



Language is a vital means of communication

"We are listened to"

Effective communication is essential for learning and relationships. We emphasise the development of language skills to help children express themselves clearly and confidently.

Our learning is understood developmentally

"We can learn"

We appreciate that each child develops at their own pace. Our teaching strategies are tailored to meet the developmental stages of our children, ensuring that learning is meaningful and accessible to all.



These principles reflect our dedication to nurturing the whole child. By doing this, we hope to empower our children to thrive both academically and emotionally. Together we can ensure that every child at Welton feels safe and confident to ignite their unique spark of genius and shine.