



Welton Primary School – PSHE Knowledge Organiser

Year: 5

Summer 1

Relationships



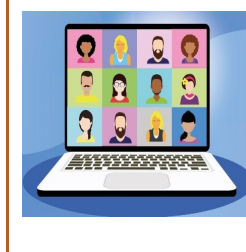
PSHE Puzzle Piece Vocabulary

Age-limit	An age under or over which something can or cannot be done.
Appropriate	Something that is suitable or proper.
Attributes	Another word for characteristics (see below)
Characteristics	A particular aspect of something or of someone's personality.
Choices	What we choose to do (between two or more things).
Community	Sharing a common vision.
Devices	Something made for adapted from a particular purpose.
Gambling / betting	Paying to play games and try to win money.
Grooming	Making friends with a child to cause them harm.
Mental health	Wellbeing to do with how someone copes with life.
Off line	Not connected to a computer or the internet.
Online	Connected to a computer or the internet.
Personal Information	Information about a specific person.
Personal qualities	Characteristics that a specific person has.
Physical Health	The state of a person's physical body.
Responsibility	The requirement to do something correctly.
Rights	Things that we are allowed to have as human beings.
Risky	To put someone or something in danger .
Screen time	The time spent using an electric device.
Self- esteem	A person's confidence in their own abilities.
Social network	A website or app used o communicate or share information with other people.
Trolled	To be abused by someone over the internet.
Trustworthy	To rely on somebody or something because of its truthfulness and honesty.
Violence	Physical behaviour used to hurt someone or cause damage to something.
Vulnerable	Being exposed to potential harm



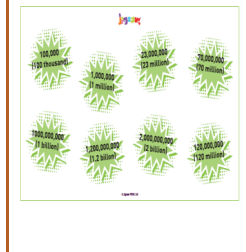
Online Communities

I can identify situations online that are safe or unsafe, and know who to ask for help if I am unsure. I know what an age-limit is and why they are appropriate based on the responsibilities that are attached to them. I can identify the age-limits of a variety of different situations, in particular situations about sharing information or communicating online or through social media.



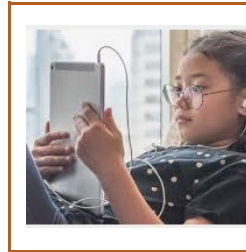
Rights and Responsibilities

I know that it is normal to want to be part of a community. I can explain what the attractions of joining an online community are. I know that people have a right to be treated respectfully and that they have responsibilities as part of an online community. I can identify any risks posed by being in an online community and what to do if I feel unsafe.



Positives and Negatives

I know that online gaming is popular in the world today and can identify positive and negative things about it. I can identify when a game becomes unsafe or risky for me and what to do if this happens. I know that games companies cannot always check people are being respectful and responsible online, and that players have to use their common sense and follow the rules to keep



Screen Time

I know that technology changes quickly and makes us more dependent on devices. I can explain how too much screen time can have a negative effect on my physical and mental health and can give examples. I know that I might have more understanding of this than some adult family members and can use different strategies to balance my screen time as an example to others.

Safe

Unsafe

I'm not sure

Staying Safe Online

I can explain what would happen if I gave information to someone who I did not trust. I can explain how I would feel if my information got posted online. I can be honest and say what information I have posted and what the impact of this might be.

Questions to Support Learning

- What online games do you like to play? Who do you play them with?
- Do you ever talk to people you don't know online?
- How do you know if people you talk to online are really who they say they are?
- What would you do if you saw or heard something online that made you feel uncomfortable?
- How much screen time do you think you should have every day?
- How shall we spend some special family time?

