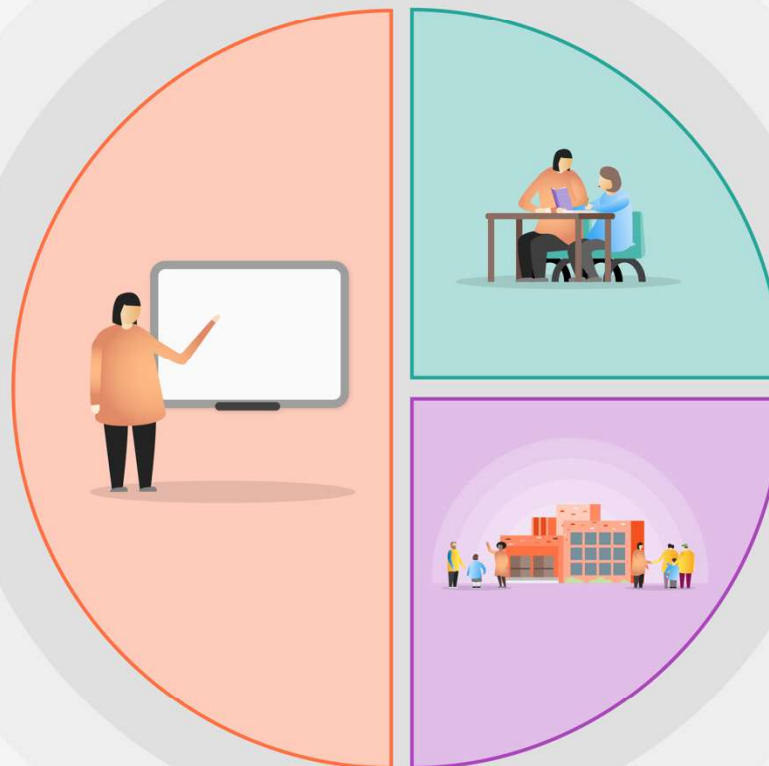


1 Teaching

- CPD and development of teaching is based on research.

The most effective teachers ensure that their students efficiently acquire, rehearse and connect background knowledge by providing a good deal of instructional support. They provide this support by teaching manageable amounts, modelling, guiding student practice, helping students when they make errors and providing for sufficient practice and review. **Rosenshine**

- Development of Maths teaching supported by the Maths Hub specialist.
- Implementation of the SEEC model to improve vocabulary and reading, supported by the s2s support
- Improving guided reading with the support of S2S support
- Using an implementation plan model, ensure the curriculum is challenging and ambitious (support from S2S0



2 Targeted academic support

- Targeted support in EYFS (Nuffield Early Language intervention)
- Targeted support reading. Tutoring programme Y1 to Y4 FFT
- Targeted support, specialist tutoring for pupils with SEND
- 1:1 tutoring –lockdown
- 1:1 tutoring Y6 ready
- Reading intervention Y5 and Y6 – reading plus.
- Maths intervention programme, training. Every Child Counts

3 Wider strategies

- SEMH- Jigsaw recovery lessons
- Staff wellbeing first aider
- SMASH programme for focus children
- Power programme Y5 Y6
- Staff offered Be Mindful course
- Regular updates to parents.
- Regular feedback opportunities
- Remote meetings

Catch Up Premium Funding

Funding: September 20-March 21 £17,360 March 21-August 21 £12,299 projected

	DFE	EEF
<p>Mainstream school will get £80 for each pupil in from reception to year 11 inclusive.</p> <p>Payment schedule</p> <p>Schools will get funding in 3 tranches.</p> <ol style="list-style-type: none"> 1 Autumn 2020 – this is based on the latest available data on pupils in mainstream schools and high needs place numbers in special, AP, hospital schools and special schools not maintained by a local authority. 2 Early 2021 – based on updated pupil and place data. This payment will also take account of the initial part payment made in autumn 2020 so that schools will receive a total of £46.67 per pupil or £140 per place across the first 2 payment rounds. 3 Summer 2021 term - a further £33.33 per pupil or £100 per place. 	<p>Schools should use this funding for specific activities to support their pupils to catch up for lost teaching over the previous months, in line with the curriculum expectations for the next academic year in actions for schools during the coronavirus outbreak.</p> <p>While schools can use their funding in a way that suits their cohort and circumstances, they are expected to use this funding for specific activities which will help pupils catch up on missed education.</p>	<p>Support strategies</p> <hr/> <p><i>Teaching and whole-school strategies</i></p> <ul style="list-style-type: none"> – Supporting great teaching – Pupil assessment and feedback – Transition support <hr/> <p><i>Targeted approaches</i></p> <ul style="list-style-type: none"> – One to one and small group tuition – Intervention programmes – Extended school time <hr/> <p><i>Wider strategies</i></p> <ul style="list-style-type: none"> – Supporting parent and carers – Access to technology – Summer support

EEF Rationale	Strategy	Implementation	Cost	Impact evaluation
<p>High quality teaching is supported by, and inextricably bound to, targeted academic support. Good assessment will reveal that some pupils have lost learning, misunderstood content, or made gains in their knowledge, during the extended period of Covid-19 partial school closures. This may require targeted one to one or small group tuition to address gaps. We can also anticipate that pupils with SEND will need specific support</p>	<p>NELI programme involves scripted individual and small-group language teaching sessions delivered by a trained teaching assistant.</p>	<p>4 x 20 mins per week, 1:1 and small group</p>	<p>Programme Funded by DfE Staffing £3000</p>	
	<p>FFT Tutoring with the Lightning Squad - Reading</p>	<p>30mins daily 10 groups of 4 pupils for 10 weeks</p>	<p>£3960</p>	
	<p>1:1 tuition with qualified teachers For pupils with Additional Educational Needs</p>	<p>15 hours x 17 pupils</p>	<p>£2812.5</p>	
	<p>Maths intervention programme Success@Arithmetic KS2</p>	<p>24 sessions 30 mins for gps of 3 repeated</p>	<p>£1140 training £4000</p>	
	<p>Maths intervention programme 1stClass Y1 and 2</p>	<p>30 x 30 min sessions gps of 4 repeated</p>	<p>£1140 training £4000</p>	
	<p>1:1 tutoring, specialist teacher lockdown</p>	<p>1 hours 10 weeks 8 pupils</p>	<p>£3000</p>	
	<p>1:1 tutoring, specialist teacher Y6 ready and SEND</p>	<p>2 x 30 mins 7 pupils for 8 weeks, repeated</p>	<p>£5000</p>	
	<p>Power - Positive outcomes, wellbeing and effective relationships programme</p>	<p>1.5 hours x 8 wks gps of 8</p>	<p>£6000</p>	
	<p>Reading Plus Y5 Y6</p>	<p>Daily 20 mins whole class (120 pupils)</p>	<p>Programme £2000</p>	